



Robert E. Lee & Associates, Inc.
Engineering • Surveying • Environmental Services

1250 Centennial Centre Boulevard • Hobart, WI 54155 • 920-662-9641 • www.releeinc.com

Addenda No. 1 ▲ **Dated:** 01/16/2018

Project Name: 2018 Utility & Street Improvements ▲ **Contract No.** 1126-18-01
Calumet County, Wisconsin

Attention Prospective Bidders. Notice is hereby given that the contract documents for the above-referenced project are amended as hereinafter set forth:

Specifications

1. Specification Section 00 41 13, Unit Price Bid Form, **REMOVE** and **REPLACE** with the attached revised Unit Price Bid Form.

Plan Sheets

1. Plan Sheet 5, **REMOVE** and **REPLACE** with attached revised Plan Sheet 5R.
2. Plan Sheet 7, **REMOVE** and **REPLACE** with attached revised Plan Sheet 7R.

This addendum shall be attached to and form a part of these contract documents. The receipt and examination of this addendum and inclusion as a part of the contract documents shall be acknowledged by the bidder in the space provided in the Bid Form on page 00 41 13-1.

Sincerely,

ROBERT E. LEE & ASSOCIATES, INC.

Ryan H. Trzinski, P.E.
Project Manager

RHT/LAR

ENC.

CC/ENC.: Laura Pavelski, CAD Manager, REL ▲ Jim Westerman, Survey Asst. Manager, REL

Accepted this _____ day of _____, 2018.

Signature

Name of Firm

UNIT PRICE BID SCHEDULE

OWNER: Village of Hilbert
 PROJECT: 2018 Utility & Street Improvements
 CONTRACT: 1126-18-01
 BID DATE: January 18, 2018 @ 10am
 ENGINEERS: ROBERT E. LEE & ASSOCIATES, INC.

Electronic Excel Version of this 00 41 13 -- Unit Price Bid Schedule is available upon request, just e-mail and request from Irogers@releeinc.com

						These columns for handwritten entries	
Item		Unit	Qty.	Unit Price	Total Price	Unit Price	Total Price
MAIN STREET / STH 114							
1	Unclassified excavation, including full depth asphalt saw cutting, removal of all material, subgrade preparation, fill import, placement, and compaction, for the unit price of:	L.F.	1,050		\$0.00		
2	Remove existing storm sewer structure, including all backfill and compaction, for the unit price of:	Each	2		\$0.00		
3	Remove existing storm sewer pipe, that is not within the same trench as the proposed storm sewer, including all backfill and compaction, for the unit price of:	LF	50		\$0.00		
4	Remove existing concrete curb and gutter, including all backfill, compaction and restoration, for the unit price of:	LF	680		\$0.00		
5	Remove existing sidewalk as required, including all backfill, compaction and restoration, for the unit price of:	SF	200		\$0.00		
6	Type B Inlets, including specified frames and lids, for the unit price of:	Each	6		\$0.00		
7	18-inch diameter storm sewer riser inlet including connecting to existing storm sewer and specified frames and lids, for the unit price of:	Each	1		\$0.00		
8	24-inch diameter storm sewer riser inlet including connecting to existing storm sewer and specified frames and lids, for the unit price of:	Each	4		\$0.00		
9	Yard drains including specified frames and lids, for the unit price of:	Each	5		\$0.00		
10	8-Inch diameter, PVC storm sewer to include all connections and all restoration, for the unit price of:	L.F.	50		\$0.00		
11	12-Inch diameter, PVC storm sewer to include all connections and all restoration, for the unit price of:	L.F.	550		\$0.00		
12	15-Inch diameter, PVC storm sewer to include all connections and all restoration, for the unit price of:	L.F.	200		\$0.00		
13	Existing sump pump / tile watertight connections to proposed storm sewer, for the unit price of:	Each	5		\$0.00		
14	4-inch Diameter, PVC storm sewer to include all connections to existing sump pumps or tile and all restoration, for the unit price of:	LF	50		\$0.00		
15	30-inch concrete curb and gutter, including 3 inches of Gradation No. 4 base course, under curb and 2' behind curb, required reinforcing bars, and preparation, for the unit price of:	L.F.	1,680		\$0.00		
16	4-inch concrete sidewalk, 3 inches of Gradation No. 2 base course and preparation, for the unit price of:	S.F.	6,700		\$0.00		
17	6-inch concrete sidewalk and pedestrian curb ramps, 2 inches of Gradation No. 3 base course and preparation, for the unit price of:	S.F.	1,800		\$0.00		
18	Detectable warning fields, for the unit price of:	S.F.	240		\$0.00		

UNIT PRICE BID SCHEDULE

UNIT PRICE BID SCHEDULE

OWNER: Village of Hilbert
 PROJECT: 2018 Utility & Street Improvements
 CONTRACT: 1126-18-01
 BID DATE: January 18, 2018 @ 10am
 ENGINEERS: ROBERT E. LEE & ASSOCIATES, INC.

Electronic Excel Version of this 00 41 13 -- Unit Price Bid Schedule is available upon request, just e-mail and request from Irogers@releeinc.com

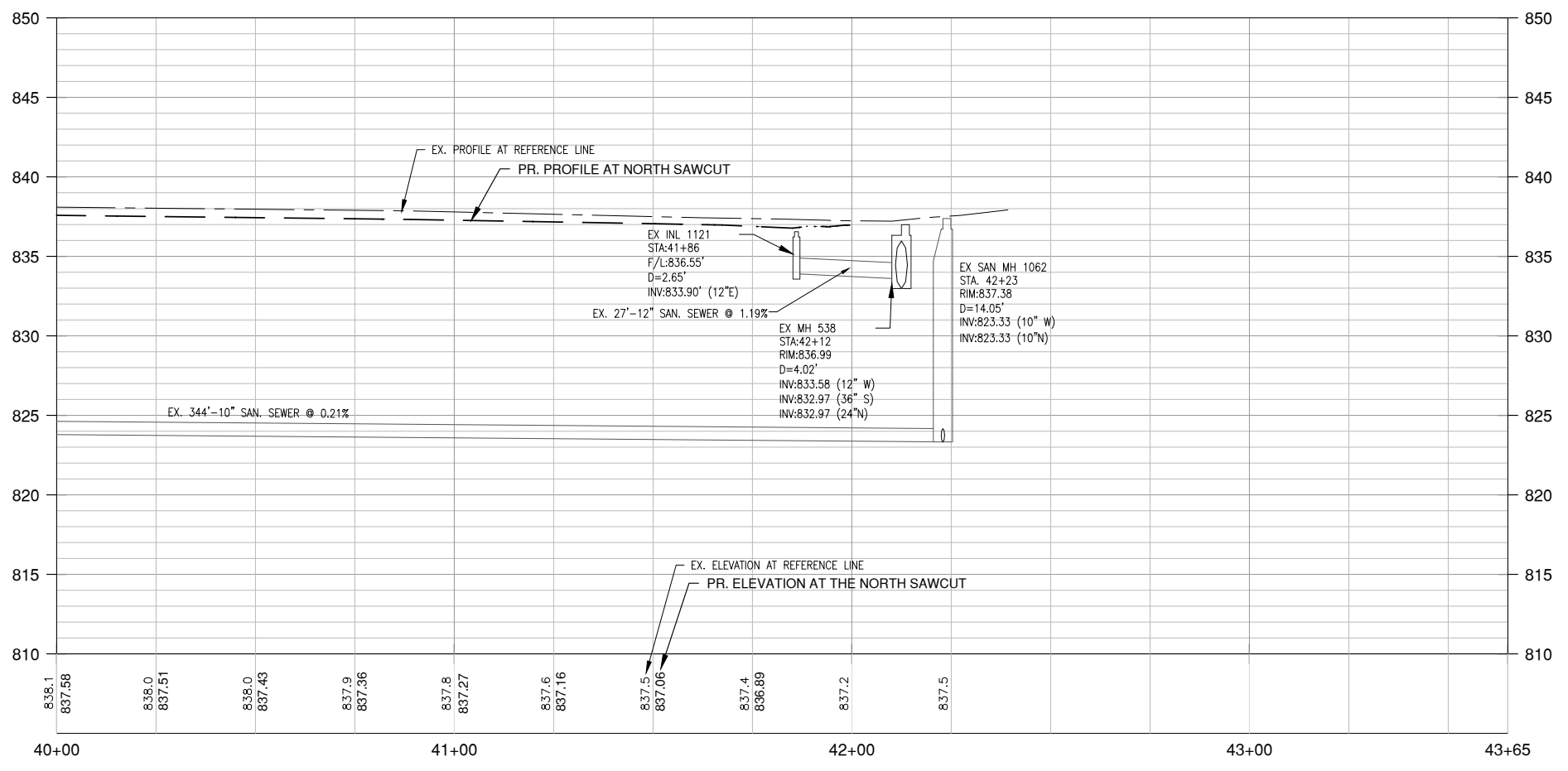
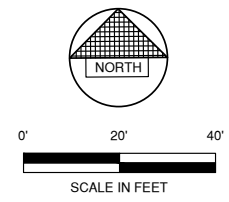
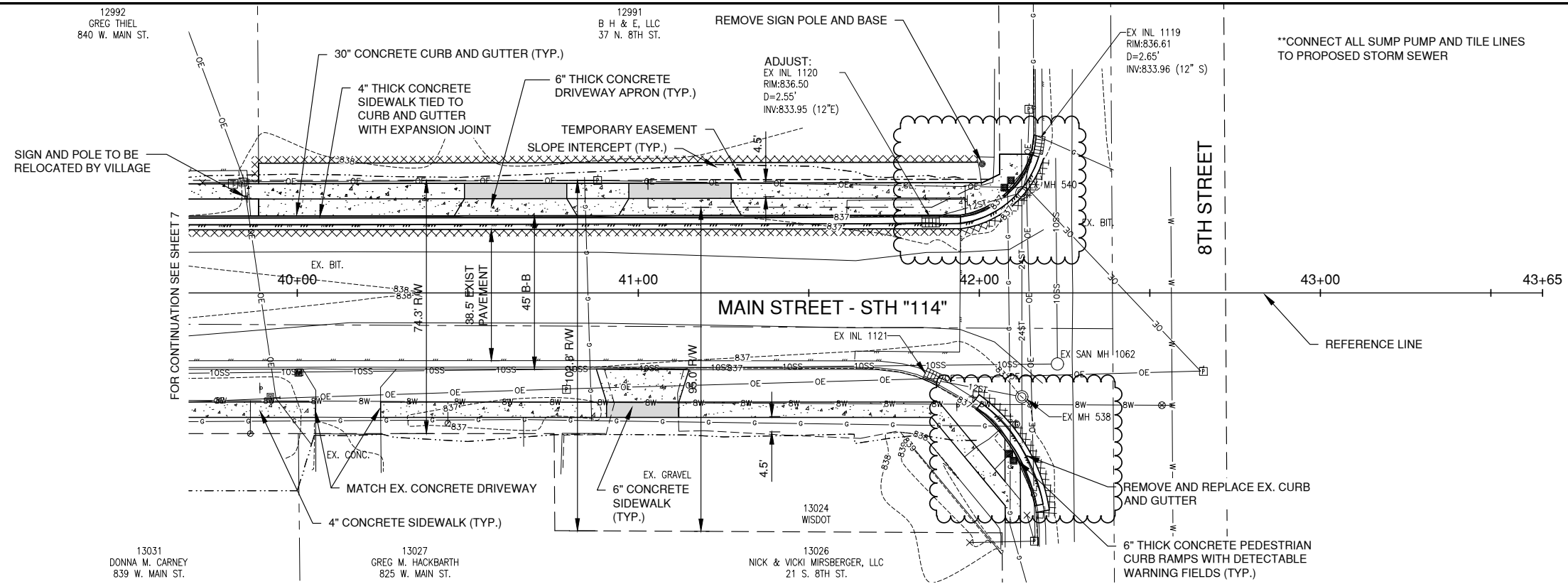
						These columns for handwritten entries	
Item		Unit	Qty.	Unit Price	Total Price	Unit Price	Total Price
19	6-inch concrete driveway apron, including sawcutting and removal of the existing apron, 3 inches of Gradation No. 3 base course and preparation, for the unit price of:	S.F.	1,200		\$0.00		
20	15 inches of Gradation No. 4 base course, compacted in place, including loading, hauling, delivery, placement, compaction and fine grading, for the unit price of:	SY	350		\$0.00		
21	Asphalt binder material, Type 4 MT 58-28 H, compacted-in-place to 3-inch depth, to include saw cutting at pavement abutments and fine grading, for the unit price of:	S.Y.	350		\$0.00		
22	Asphalt surface material, Type 5 MT 58-28 H, compacted-in-place to 2-inch depth, for the unit price of:	S.Y.	350		\$0.00		
23	Asphalt surface material (Driveways/terrace areas), Type 5 LT 58-28 S, compacted-in-place to 2-inch depth, for the unit price of:	S.Y.	300		\$0.00		
24	Asphalt surface material patching, Type 5 LT 58-28 S, compacted-in-place to 2-inch depth, including and required milling to achieve required thickness, for the unit price of:	S.Y.	75		\$0.00		
25	Restoration, including embankment material, topsoil, seed, fertilizer and temporary erosion control blanket, Class I, Type A Urban, including all appurtenances, installed and maintained, for the unit price of:	S.Y.	6,000		\$0.00		
26	Maintain restoration areas through consistent 70% vegetation growth to include watering, fertilizing, cutting and weed control, as conditions require, for the unit price of:	S.Y.	6,000		\$0.00		
27	Existing overhead sign base removal, including all disposal, transportation, backfill and compaction, for the unit price of:	Each	1		\$0.00		
28	Install 6-inch crosswalk epoxy pavement markings, per WisDOT specifications 646, for the unit price of:	L.F.	850		\$0.00		
29	Traffic control conforming to "Manual of Uniform Traffic Control Devices" (MUTCD) standards, latest edition, including implementation, maintenance and removal, for the unit price of:	L.S.	1		\$0.00		
30	Inlet protection including maintenance and removal for the unit price of:	Each	18		<u>\$0.00</u>		
Total Main Street / STH 114, Items 1-30					\$0.00		
LYNWOOD DRIVE							
31	Asphalt surface material, Type 5 LT 58-28 S, compacted-in-place to 1 1/2-inch depth, including cleaning of existing binder course, milling a paving joint at Fox Trail surface pavement, placement of tack coat per specifications, for the unit price of:	S.Y.	800		\$0.00		

UNIT PRICE BID SCHEDULE

OWNER: Village of Hilbert
 PROJECT: 2018 Utility & Street Improvements
 CONTRACT: 1126-18-01
 BID DATE: January 18, 2018 @ 10am
 ENGINEERS: ROBERT E. LEE & ASSOCIATES, INC.

Electronic Excel Version of this 00 41 13 -- Unit Price Bid Schedule is available upon request, just e-mail and request from Irogers@releeinc.com

						These columns for handwritten entries	
Item		Unit	Qty.	Unit Price	Total Price	Unit Price	Total Price
32	Adjusting sanitary manholes to proposed final grade, including all required milling and appurtenances, for the unit price of:	EA	1		\$0.00		
33	Adjusting water valves to proposed final grade, for the unit price of:	EA	1		\$0.00		
34	Bituminous binder course patching material, 4 LT 58-28, placed at 2-inch depth, including all sawcutting, removal, disposal, and fine grading, for the unit price of:	SY	10		<u>\$0.00</u>		
Total Lynwood Drive, Items 31-34					\$0.00		
MISCELLANEOUS							
35	3-inch to 4-inch breaker run including excavation and disposal of soils in areas of excavation below subgrade, as determined, by the Engineer in the Field, for the unit price of:	CY	200		\$0.00		
36	6 oz./s.y. non-woven geotextile fabric, as required by the Engineer in the field, for the unit price of:	SY	400		\$0.00		
37	Silt fencing installed, maintained, and removed after 70% vegetation is established, for the unit price of:	LF	900		\$0.00		
38	bituminous patching material, 4 LT 58-28, placed at 4-inch depth in 2 lifts, for numerous small patches within the Village, all sawcutting, removal, disposal, and fine grading, shall be provided by the Village, for the unit price of:	SY	50		\$0.00		
39	bituminous patching material, 4 LT 58-28, placed at 2-inch depth, Village asphalt shed, all sawcutting, removal, disposal, and fine grading, shall be provided by the Village, for the unit price of:	SY	50		\$0.00		
40	Install 6-inch crosswalk epoxy pavement markings, per WisDOT specifications 646, at 3 locations on STH 57, as directed by Village Engineer, for the unit price of:	L.F.	480		\$0.00		
41	Allowances, as specified in Specification Section 01 21 00, for the lump sum price of:	LS	1	\$5,500.00	<u>\$5,500.00</u>	<u>\$5,500.00</u>	<u>\$5,500.00</u>
TOTAL MISCELLANEOUS, Items 35-41					\$5,500.00		
TOTAL CONTRACT 1126-18-01, Items 1-41					<u>\$5,500.00</u>		



File: R:\1106\1126\112618-01\112618-01_STH_114.dwg
 Plot Date: Jan 15, 2018 10:24 AM
 User: STH_114 (3)
 Layout:

NO.	DATE	APPROV.	REVISION	NO.	DATE	APPROV.	REVISION
1	01/12/18	RHT	ADDENDA NO. 1				

CONTRACT NO. 1126-18-01
 2018 UTILITY AND STREET CONSTRUCTION
 VILLAGE OF HILBERT
 CALUMET COUNTY, WISCONSIN

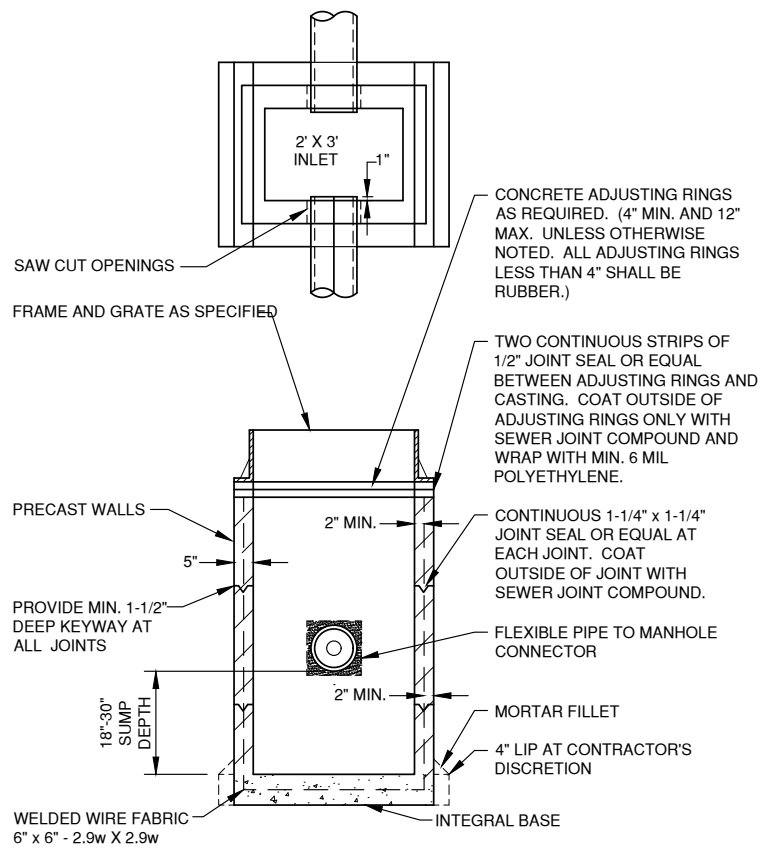
MAIN STREET - STH "114"
 STA. 40+00 TO STA. 43+65

DATE: 11/20/17
 FILE: A_STH_114
 JOB NO.: 1126198



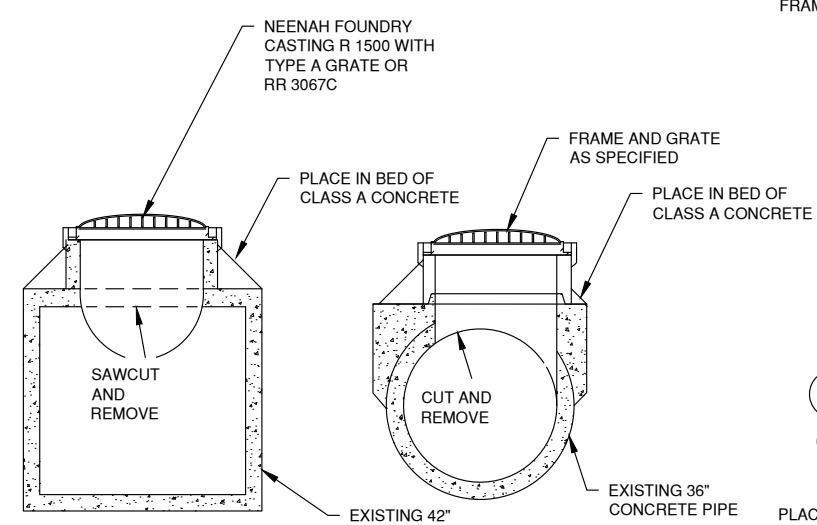
Robert E. Lee & Associates, Inc.
 ENGINEERING, SURVEYING, ENVIRONMENTAL SERVICES
 1250 CENTENNIAL CENTRE BOULEVARD HOBART, WI 54155
 920-662-9641 www.releeinc.com

SHEET NO. **5R**

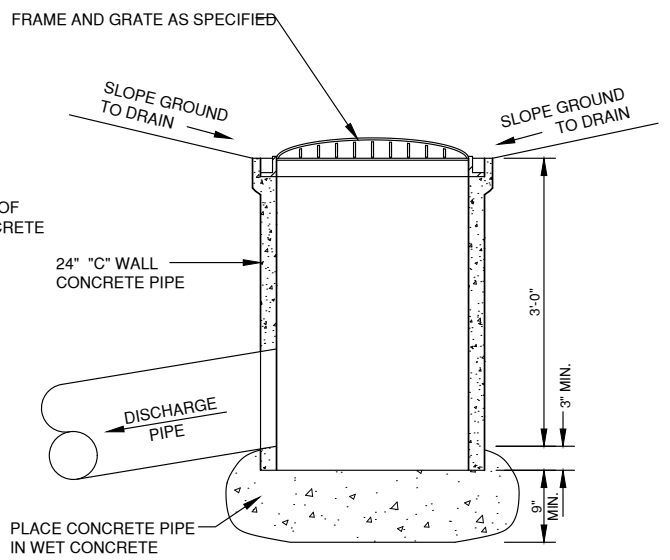


ALL PRECAST INLET UNITS SHALL CONFORM TO THE PERTINENT REQUIREMENTS OF AASHTO DESIGNATION M 199

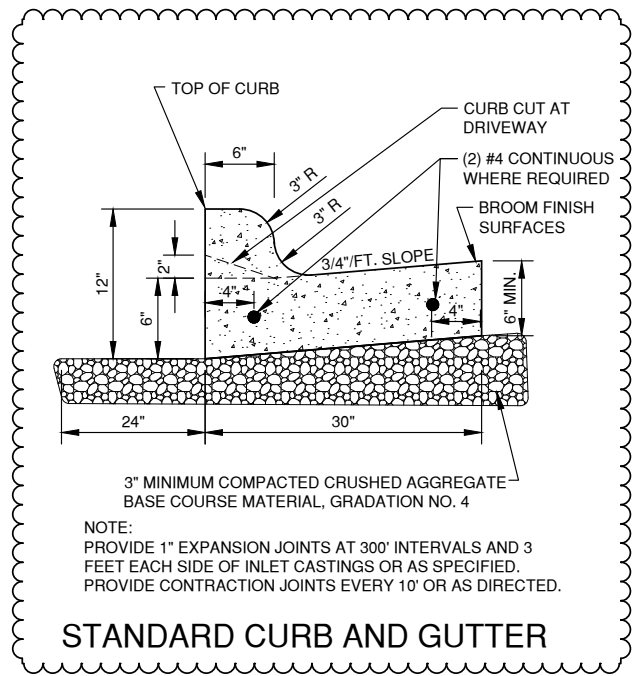
TYPE 'B' STORM INLET



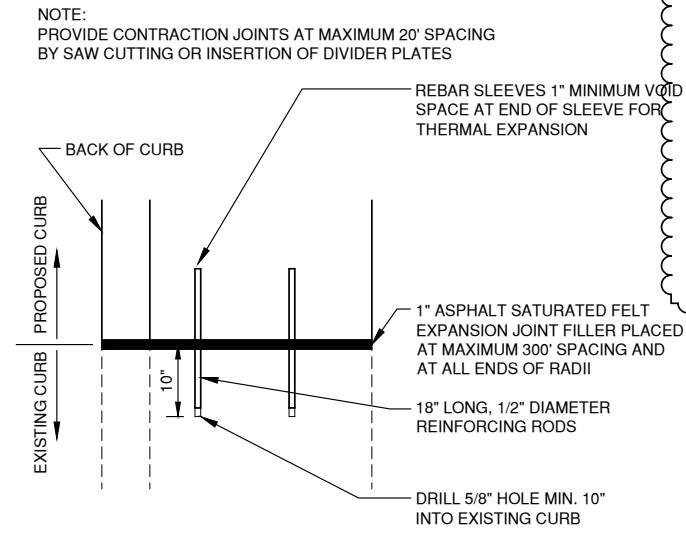
STORM RISER INLET DETAIL



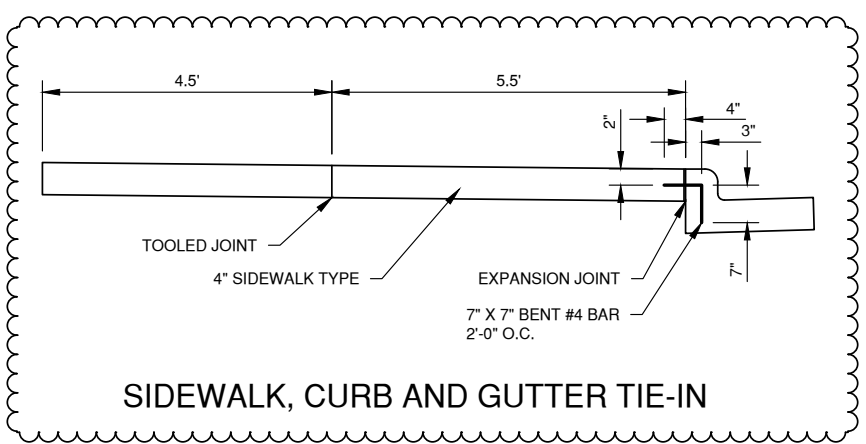
TYPICAL YARD DRAIN



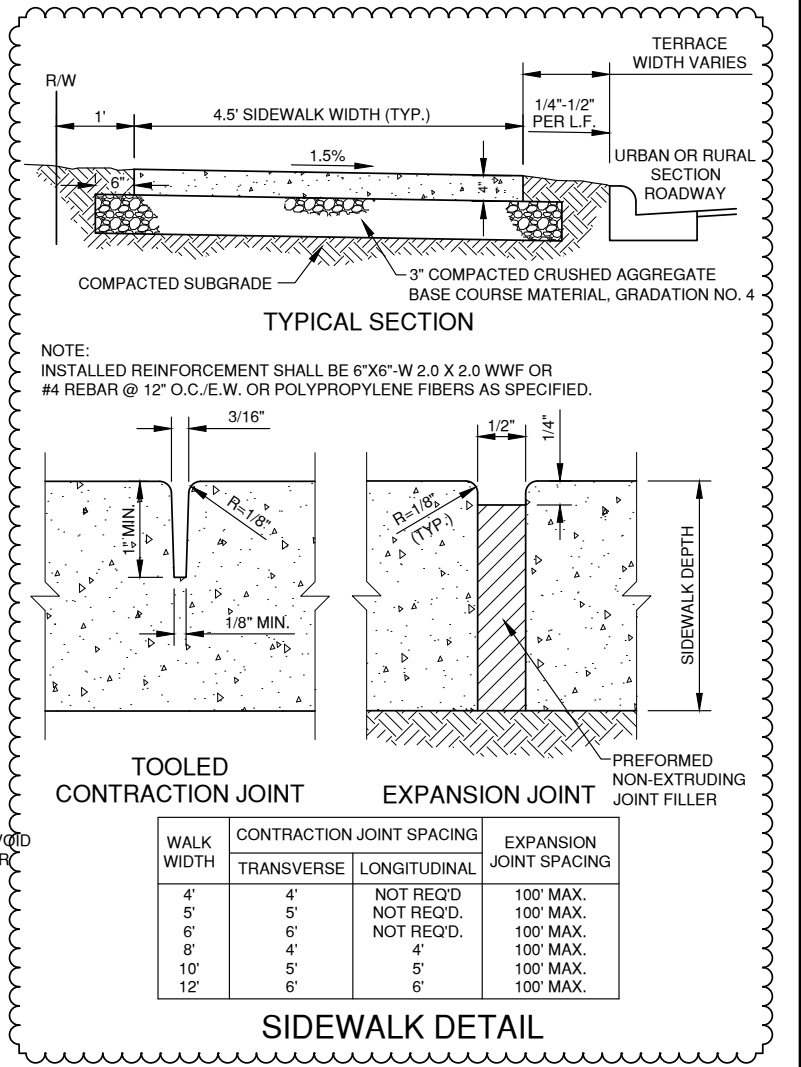
STANDARD CURB AND GUTTER



CURB TIE-IN DETAIL (PROPOSED TO EXISTING)



SIDEWALK, CURB AND GUTTER TIE-IN



File: R:\1106\1126\112618-01\112618-01\DETAILS.dwg
 Plot Date: Jan 15, 2018 - 9:56am
 LAYOUT: DETAILS 1

NO.	DATE	APPROV.	REVISION	NO.	DATE	APPROV.	REVISION
1	01/12/18	RHT	ADDENDA NO. 1				

CONTRACT NO. 1126-18-01
 2018 UTILITY AND STREET IMPROVEMENTS
 VILLAGE OF HILBERT
 CALUMET COUNTY, WISCONSIN

MISCELLANEOUS DETAILS

DATE: 11/20/17
 FILE: DETAILS
 JOB NO.: 1126198

Robert E. Lee & Associates, Inc.
 ENGINEERING, SURVEYING, ENVIRONMENTAL SERVICES
 1250 CENTENNIAL CENTRE BOULEVARD HOBART, WI 54155
 920-662-9641 www.releeinc.com

SHEET NO. **7R**